

## Chasing Ghosts?

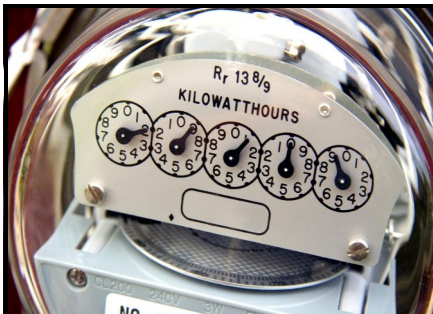
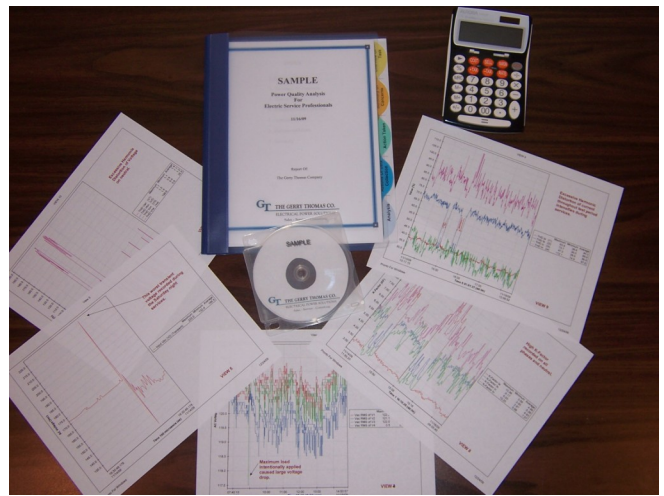
*You Cannot Remedy the Problem Until You Identify the Problem!*

Electrical Power Quality issues can only be properly addressed if you know exactly what PQ issue is affecting your Electrical system. Is it Deep Voltage Sags? Harmonic Distortion? Transient Spikes? Common Mode Noise? Over/Under Load? Poor Power Factor? Flicker? Source Impedance? Is the problem originating in your facility or is it caused by others served by the same utility? Or could it be a combination of issues resulting in "Ghosts" that you cannot identify? Chasing "Ghosts" is a very costly endeavor and seldom results in actual problem solving.

The Gerry Thomas Co. specializes in solving Electrical Power Quality and Power Distribution problems! An engagement will provide:

- \* Interview system users and operators
- \* Data gathering of 500 streams at over 20,000 samples per cycle with single cycle resolution.
- \* Expert analysis of collected data.
- \* Report generation including a statement of objectives, Statement of concerns from interview, graphs of each data stream that is out of tolerance or reveals events and disturbances, digital copy of data collected for future reference and recommendations that will.....

**SOLVE the PROBLEMS!**



AEP Ohio's plan proposes electricity rates for the company's Ohio customers through 2011 and if approved as filed, would result in total electricity rate increases of approximately 15 percent per year for the next three years. The plan includes increases in base rates for generation and distribution, as well as separate trackers for collecting fuel costs and required investments in energy efficiency and demand-side management programs. AEP Ohio anticipates a decision from the PUCO on its plan by the end of the year. New rates would go into effect beginning Jan. 1, 2009.

Payback and ROI are primary objectives and our recommendations will provide the most cost effective options based on your actual load profile. In these highly competitive times every effort to conserve energy and improve operations and production must be pursued.

***Stop chasing ghosts! Stop the finger-pointing! Get definitive answers!***

I would be happy to discuss your Power Quality concerns and propose a solution? Please contact:

Gerry Thomas  
[gerry@gerrythomascompany.com](mailto:gerry@gerrythomascompany.com) Phone; 614-452-3497  
or  
Kathy Shull  
[kathy@gerrythomascompany.com](mailto:kathy@gerrythomascompany.com) Phone: 740-653-1728

[www.gerrythomascompany.com](http://www.gerrythomascompany.com)